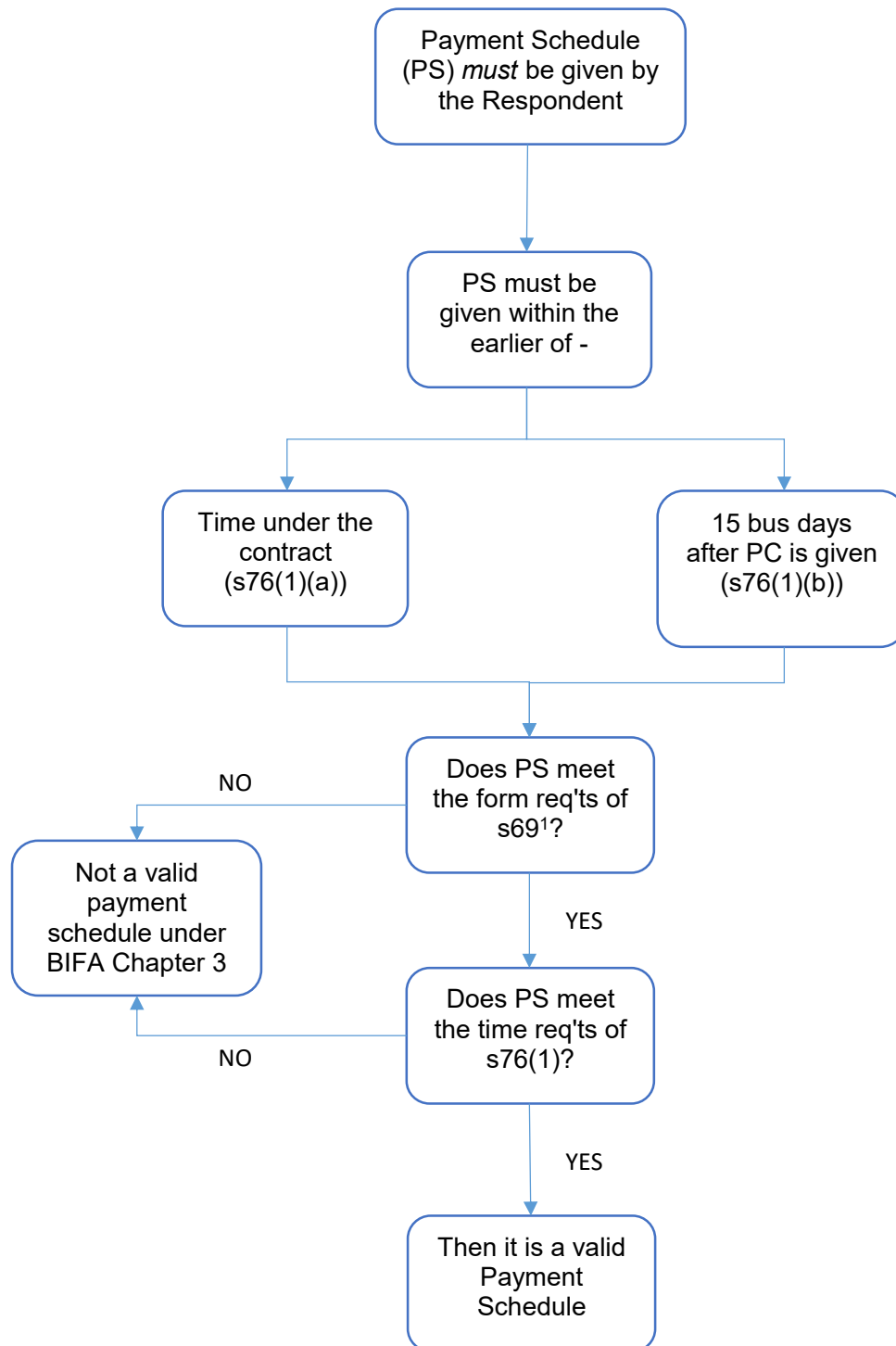


## PAYMENT SCHEDULES (PS)



NB: A Payment Schedule does not need to be given if payment in full of the amount claimed is made by the Due Date for Payment<sup>2</sup>.

<sup>1</sup> A Payment Schedule must be in writing, refer to the Payment Claim, state how much the Respondent proposes to make, and if it is less than the amount claimed, all of the reasons why it is less.

<sup>2</sup> Due Date for Payment is determined by s73 of the BIF Act.